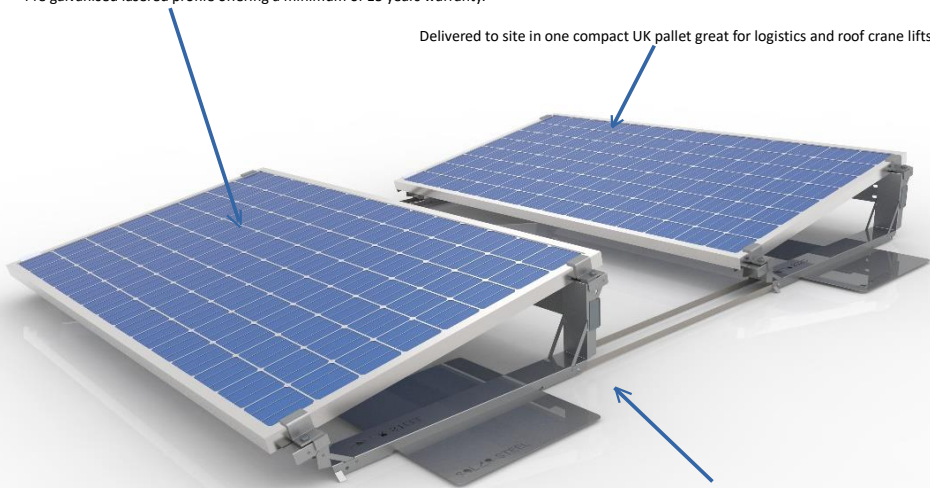


Pre galvanised lasered profile offering a minimum of 15 years warranty.

Delivered to site in one compact UK pallet great for logistics and roof crane lifts



Compact and lightweight system easy to assemble and move on site.

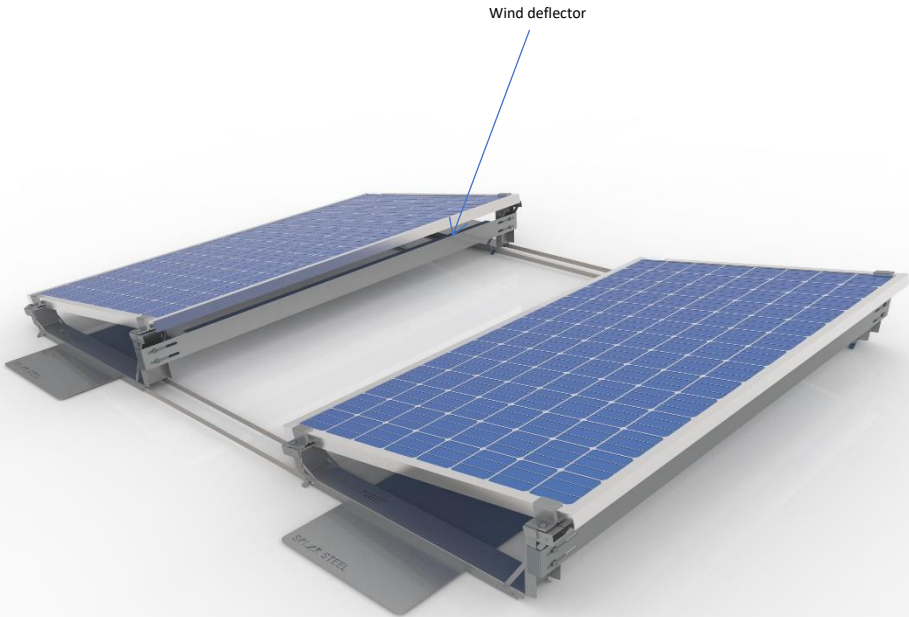
SSS – 2PS PV SUPPORT SYSTEM

Introducing our brand new 2PS commercial ballast support system. This laser profiled module consists of just 2 parts providing an incredibly fast and simple build time. The high engineering design technology also provides an unparalleled professional appearance to complement your installation aesthetics.

The pre fabricated central module (1) is designed for a 10 degree installation in landscape or portrait PV arrays. One single ballast tray simply clicks into the central module.

The ballast tray has a fully protective rubber gripper pad to ensure the roof membrane is never damaged and the ribbed profile dramatically reduces any wind load potential movement of the structural framework.

Our 15 year warranty covers corrosion and replacement of any defect parts that may occur during the lifetime of the installation.



Features & Benefits

- # Simple 2 part build system.
- # 10 second build time.
- # British engineered and manufactured.
- # 15 year warranty.
- # Low ballast requirement from 20kg per panel.
- # Protective rubber base system with anti-slip technology
- # 2PS systems can be separate rows or grid linked.
- # Wind deflectors supplied as standard.

